

# LPD2004

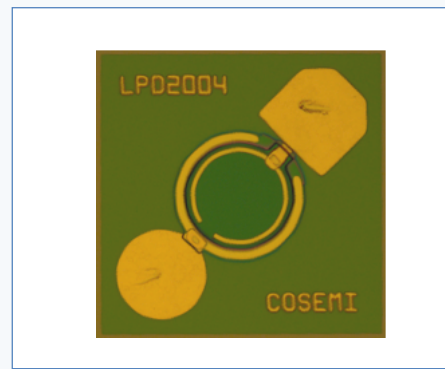
## InGaAs PIN Photodiode

### APPLICATIONS

- Long-haul optical networks
- Single mode datacom and telecom
- Fiber-optic transceivers, receivers and transponders

### FEATURES

- Large aperture
- Low operating voltage
- Low capacitance
- Telcordia Qualified



Cosemi's LPD2004 is a mesa-structured, InGaAs/InP-based PIN photodiode offering high responsivity, low dark current and low capacitance for high bandwidth, high performance optical receiver designs.

The large contact pads allow for convenient automated wirebonding or flip-chip attachment and low parasitic capacitance.

**Proprietary and Confidential Information** - Information contained in this document is proprietary and confidential to Cosemi. Accordingly, any reproduction, distribution or disclosure of such information without the express written consent of Cosemi is strictly prohibited.